

TATARAK MEDIUM - Shelf

design by: Maja Ganszyniec 2020



The form is minimalistic and bold. Oak shelves with a T shape end details and a spacious chest at the bottom are bound together by vertical, tubular legs in an almost architectural structure. Its robust construction and the generous depth allow the bookshelf to be placed against the wall or as a free-standing element dividing the room. The Tatarak shelves will work well in various spaces. The tallest one is perfect for a living room or an office, where all books and binders will fit, and charging issues are solved. In the kitchen, the mid height shelf can provide an additional working surface, plates and mugs will be at hand, and less used pots and pans will sit in a box until we need them. The lowest variant will serve simply as a tv bench, with extra space for all cables and chargers.

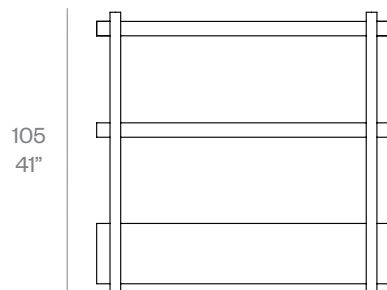
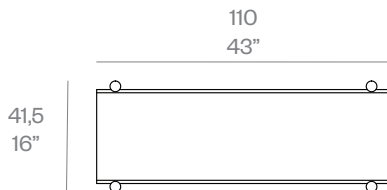
Shipment details

Quantity	1 bookshelf (3 boxes)
Volume	0,16m ³ / 5,65 ft ³
Weight	28 kg / 62 lb

Items dimensions:
(width x depth x height)

bottom box: 113 cm x 38cm x 26 cm (10kg)
shelves: 113 cm x 38cm x 8 cm (11kg)
pilars: 108 cm x 12 cm x 12 cm (7 kg)

* File CAD 2D - 3D available for customer's request.



Environment-Indoor

Spaces-Homes, co-works, meeting rooms, living rooms.

Country of Production-Poland

Preassembled - No, assembling required

Spare Parts-No

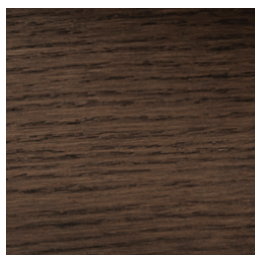
Nurt

Producer:
Nurt Operations Sp. z o.o.
ul. Księcia Witolda 38-40, U6
PL-50202 Wrocław, Poland
VAT No: PL8982283468
order@nurthome.com

1/3



natural
(water - based varnish)



dark oak

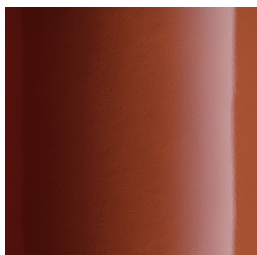
Care

Clear matt lacquer & Dark oak matt lacquer / Oak Wood

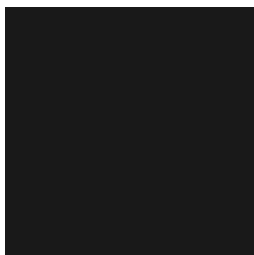
Finish: Clear matt lacquer provides an easy to care for durable finish that doesn't compromise the natural beauty of the wood grain and natural light color. Nurt's laquered furniture is finished with an Eco friendly water based lacquer.

Care: We recommend that all kitchenware and beverages should be placed on mats or coasters and any spillages should be wiped away immediately.

Cleaning: To clean, wipe with a damp cloth before buffing with a dry cloth. In the event of more stubborn marks, a solution of mild detergent should be used on the cloth. Silicone based polishes should not be used on the wood as they will build up and leave a sticky residue on the Surface



amber
(powder coating)



anthracite
(powder coating
RAL 9011, matte)

Any frame color from the RAL palette: + 10% to the product price from available upholstery configuration

Care

Cleaning: Best clean with a soft cloth moistened with mild detergent.
Do not use bleaches, and strong cleaning agents containing abrasives.